

Basstones Sheet

Numéro De Style	0301V	
Référence De La Baguette De Soudure	353VS	
Construction	Rouleau Hétérogène Commerciale	
classe	Type I, Grade 1, Class B	
Classe d'Endos	Endos fusionné à 4 plis	
Finition	ExoGuard®	
	Impérial	Métrique
Épaisseur De La Couche d'Usure	20 mil (0.02 in)	0.51 mm
Épaisseur Générale Du Produit	0.087 in	2.2 mm
Installation	Direct Glue	
Adhésif Recommandé	S150-95 Resilient Tile Spray, 4200 Resilient Sheet 1 Gallon, 4200 Resilient Sheet 4 Gallon or 4151 Multi-Use Premium 4 Gallon	

Emballage

Dimensions Réelles Du Rouleau	6.00 ft w x 75.00 ft l	1.83 m w x 22.86 m l
Surface Par Rouleau	50 sy/roll	41.81 sq m/roll
Poids Par Rouleau	267.5 lbs	121.34 kg



Méthodes d'Installation Conseillées



Inverse

Performance + Tests Et Essai

Poinçonnement Rémanent (Astm F1914)	Passes
Souplesse (Astm F137)	Passes
Résistance À La Chaleur (Astm F1514)	Passes
Résistance À La Lumière (Astm F1515)	Passes
Résistance Chimique (Astm F925)	Passes
Coefficient De Frottement (Astm D2407, Résistance Au Glissement)	≥0.5, meets the recommended static coefficient of friction for ADA walking surfaces

Test Reports may be included or listed by the manufacturing/inventory style number as opposed to the noted selling style number.

Garanties

[Limitée Commerciale De 15 Ans](#)  
[Commercial 15 Year Underbed Bond Warranty](#)

Diversity, Equity & Inclusion

We believe all humans are equal. Individually and collectively, we need to proactively create and promote opportunities that give everybody an equal footing in life. We nurture an environment where every voice and perspective can be heard, and proactively promote accessibility and inclusivity inside our network and beyond. One proof point is our ability to meet the criteria of the Social Fairness pillar of the Cradle to Cradle Product Standard. At Shaw Industries, we promote supplier participation that is reflective of Shaw's diverse customer base and local community. More than 42% of our spend\*\*\*\*\* is with small and diverse businesses. We believe having a strong Supplier Diversity Program is strategic for bringing more innovation to our businesses and opening new markets for growth.







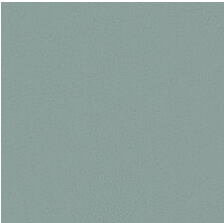

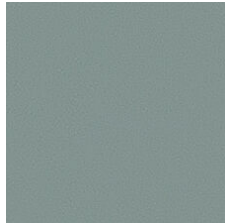

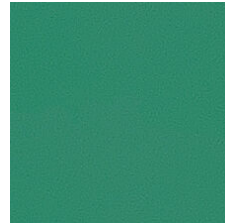
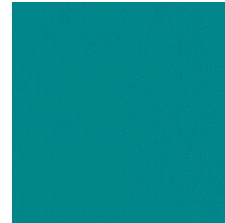
Attributes + Certifications

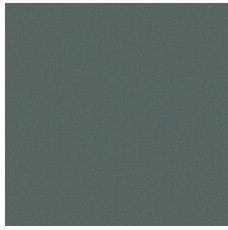
Climate Impact	
Environmental Product Declaration (EPD)	Certifié Par Une Tierce Partie Conformément Aux Normes ISO 14025, EN 15804 Et ISO 21930:2017
Total Recycled Content	0% (Pre-Consumer 0%   Post-Consumer 0%)
Global Product Assessment	FloorScore®   Agréé CE Marking (EN 14041)   Certifié Par Un Tiers Country of Origin   Imported

Contribution Au Certificat Vert Leed

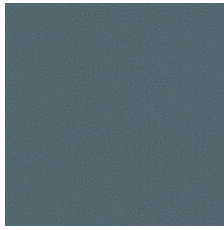
« Crédit MR : Divulcation et optimisation des produits de construction	<b>3rd Party Certified in Accordance with ISO 14025, EN 15804, &amp; ISO 21930:2017</b>
Crédit EQ : matériaux faibles émissions	<b>FloorScore Certified</b>
<a href="#">Installation Guidelines</a>	Please visit <a href="http://www.shawcontract.com">www.shawcontract.com</a> for the most current warranty information.
<a href="#">Maintenance Guidelines</a>	Specifications are subject to nominal manufacturing variance. Material supply and/or manufacturing processes may necessitate changes without notice.
	This product is an exclusive design and may not be duplicated in any manner. Use of this design in the creation of another product design is also strictly prohibited.
	*****Allowable spend is domestic (US) spend in categories in which we have diverse suppliers from which to choose. Compared to non-allowable spend which includes categories in which we do not have domestic, small or diverse suppliers available to meet our needs.
	Visit <a href="http://shawcontract.com/testing">shawcontract.com/testing</a> for more information.

Available Colorways

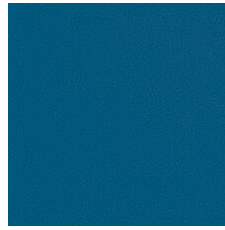
 Flaxen Vibe 00100 Weldrod 02001	 Ecru Cadence 00110 Weldrod 02001	 Desert Sound 00120 Weldrod 02027	 Polished Brass 00140 Weldrod 09633	 Set Off 00200 Weldrod 02002	 Camel Accent 00210 Weldrod 02025
 Coastal Tempo 00300 Weldrod 02003	 Underscore 00310 Weldrod 02004	 Stanza Sage 00320 Weldrod 02005	 Tonal Vine 00330 Weldrod 02003	 Elevate 00340 Weldrod 02006	 Amplitude 00350 Weldrod 02007



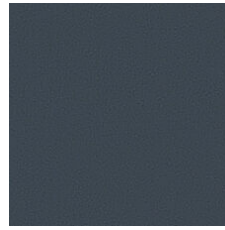
Aqua Tone 00360  
Weldrod 02008



Graytone Fade 00410  
Weldrod 02009



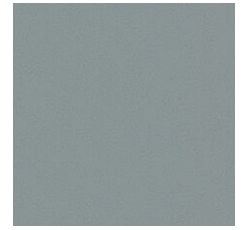
High Fidelity 00420  
Weldrod 02010



Mineral Score 00430  
Weldrod 02011



Pearly Melody 00500  
Weldrod 01203



Pewter Serenade 00530  
Weldrod 05244



Ashen Interval 00540  
Weldrod 02014



Boost 00600  
Weldrod 02017



Adobe Verse 00610  
Weldrod 02018



Chorale Clay 00630  
Weldrod 01823



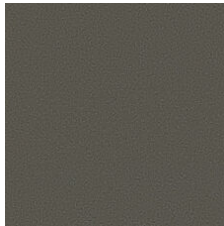
Khaki Cue 00700  
Weldrod 02001



Neutral Intro 00710  
Weldrod 02020



Gilded Mink 00750  
Weldrod 02026



Coffee Echo 00760  
Weldrod 05230



Amplify 00800  
Weldrod 02022



Emphasize 00900  
Weldrod 02024

